



**DENTALAIRE** 

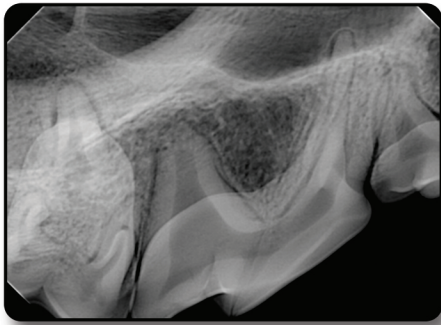
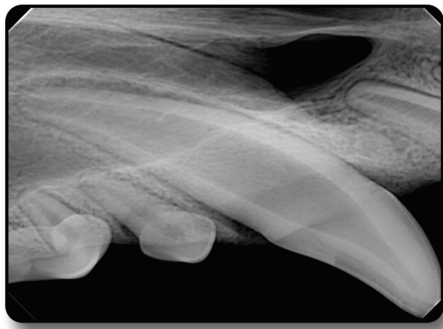
Meeting and Exceeding the Needs of Veterinary Dentistry since 1988

# Wireless Portable X-Ray



***Lightweight. Powerful. Ergonomic.***

Take excellent X-ray images at anytime or anyplace.



DTP61307

## TECHNICAL SPECIFICATIONS

### Unit Dimensions

Height	118 mm
Width	168 mm
Depth	228 mm
Weight	4.4 pounds

### X-ray Generator

Tube Voltage	70kV
Tube Current	2 mA
Time Setting Range	0.5 - 1.0 second (0.01 second step)

### X-ray Tube

Type	Stationary Anode
Focal Size	0.4 mm
Target Angle	12.5°
Total Filtration	2.6 mm Al (Inherent: 1.0 mm Al / Fixed Added: 1.6 mm Al)

### X-Ray Field

Round Type	53 mm
Rectangular Type	30 x 40 mm

### Display

Unit	TFT LCD
------	---------

### Voltage to Use

Battery	DC 14.8 V
Charger	Input: 100~240VAC, 50~60Hz, 0.5A Output: DC16.8V, 1.0A

### Warranty

Unit	1 Year
Battery	6 months

The Dentalaire Portable X-ray System, DHX-70H is an advanced high frequency dental X-ray apparatus with fixed 70kVDC and 2mA tube current. It is designed to produce diagnostic high-quality X-rays.

- Simple operation
- Wide graphic LCD
- Lightweight and ergonomic design
- Integrated battery
- High frequency transformer
- 0.4 mm focal spot
- Highest image quality and lowest patient dosage
- High quality neck strap
- Zero radiation leakage
- Optimized for both analog film and digital sensor



[www.Dentalaire.com](http://www.Dentalaire.com) | 800.866.6881

Dentalaire | 17742 Mitchell North, Suite B Irvine CA 92614

[info@dentalaire.com](mailto:info@dentalaire.com)