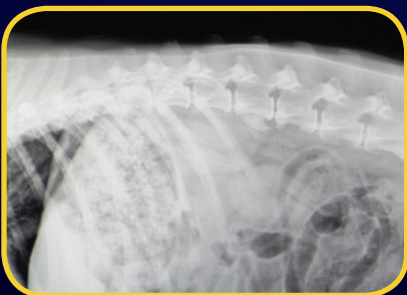
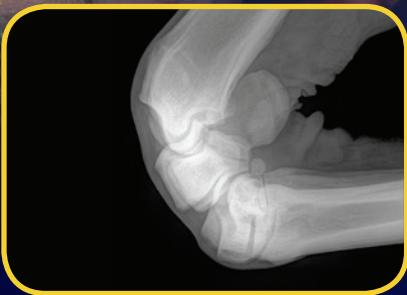


SA100+HF



Designed for the companion or mixed animal practitioner, the **SA100+HF Radiography System** is easy to use, compact and requires just 10 square feet of floor space. This system combines our most powerful **HF100+ Ultra Light** veterinary x-ray unit with the **XRT100+** table. Features of the **SA100+HF** include:

- Operation on incoming voltage of 110-240 VAC 50/60 Hz
- **XRT100+** table with cassette tray and 6:1 ratio, 103 lpi stationary grid
- Integrated tube stand and cassette tray with longitudinal travel, for easy patient positioning
- Simple mounting and removal of portable x-ray device for use on ambulatory calls
- Backed by a 5-year limited warranty

MINXRAY[®]
INC.

Where you care, we're there.

SA100+HF

HF100+ ULTRA LIGHT X-RAY UNIT

ELECTRONIC DESIGN	Computer-controlled, high frequency, full-wave rectified
X-RAY OUTPUT	40mA@40-50 kVDC, 35mA@52-60 kVDC, 30mA@62-70 kVDC, 25mA@72-80 kVDC, 20mA@82-100 kVDC
AC INPUT	110 or 240 V; 50/60 Hz, 20 amps
LINE VOLTAGE ADJUSTMENT	Automatic, dynamic
TIMER	Ultra high resolution, 0.1-2.0 sec (61 total steps)
INTERNAL POWER SUPPLY	60 kHz Resonating High Frequency Inverter System
X-RAY TUBE	Toshiba D-124K
FOCAL SPOT SIZE	1.2 mm
ANODE HEAT STORAGE	20 kHU
TOTAL FILTRATION	2.7 mm Al equivalent
COLLIMATOR	Continuously adjustable light beam type with adjustable dual integrated laser pointers to indicate central ray and distance in bright ambient light conditions
LP4 LASER POINTERS	Class IIIa; max. output less than 5.0 mW, wavelength 600-680 nm
EXPOSURE SWITCH	FS-HF footswitch
EXPOSURE CORD	8 ft (2.4 meters)
POWER CORD	20 ft (6.1 meters)
SIZE	9.45 x 7.72 x 14.37 in (24 x 19.6 x 36.5 cm)
WEIGHT	24.2 lb (11 kg)

XRT100+ COMPACT X-RAY TABLE

SIZE	23 x 54 in (58.4 x 137.2 cm)
TABLE HEIGHT	31.5 in (80.01 cm)
FOCAL FILM DISTANCE	34 in (86 cm)
WEIGHT	140 lb (64 kg)



Ordering Information

The SA100+HF Radiography System includes:

- 1 ea. **HF100+** x-ray unit with FS-HF footswitch
- 1 ea. **XRT100+** table with integrated tubestand and cassette tray

Optional 12 in side extensions available and Carrying case for the **HF100+** (Recommended for use on ambulatory calls)

Shipping Weight of 215 lb (97 kg)

For more information about MinXray products, contact your local dealer or MinXray at:

MinXray, Inc.
3611 Commercial Avenue
Northbrook, Illinois 60062 USA
1-847-564-0323

Toll Free: 1-800-221-2245 (U.S. & CA.)
E-mail: info@minxray.com
Web: www.minxray.com

MINXRAY[®] INC.

Where you care, we're there.

